

LANGRIVILLE NEWS



GREAT SHOW AGAIN

Langrick's annual village produce show was a winner again with even more entries, Pictures on the right show the wonderful cakes, Kathy Roberts presenting the trophy to Mary Walker, the spectacular Flowers and Cllr Tom Ashton presenting Gino Cawthorne with his well deserved cup for best youth effort. The Competition this year was very close. Overall points were as follows

Mary Walker 31
Val Simpson 29
J. Barton 26

Making Mary the winner of the overall highest points trophy and also the Maureen Allan Shield.

Craft entries were also up but not, this year, the giant pumpkin competition.



THE NEXT VILLAGE SHOW

"Combining excellent musicianship with lively banter and an audience connection second to none."

Folk Monthly
MAGAZINE

"The musicianship is unsurpassable, and the songwriting excellent."

Blues in Britain
MAGAZINE

"Powerful acoustic line up with strong songs, engaging the audience with their self deprecating humour."

Tim Porter
PROMOTER

Mumbo-Jumbo

Troubadours & Raconteurs
in a Roots, Folk, Bluesy Vibe



Nominated
for Songwriters
of the Year -
British
Blues Awards

LANGRICK VILLAGE HALL (PE22 7AN)

Saturday 21 October 7:30 pm

£10.00 (Standard)

BOOK NOW: Kathy or Jim 01205 280 843 or 07794 507 773

Hall open from 7pm, Licensed bar; teas & coffee available - bring your own nibbles.

lincsruraltouring.co.uk

Lincolnshire

Lincolnshire

ARTS COUNCIL
ENGLAND

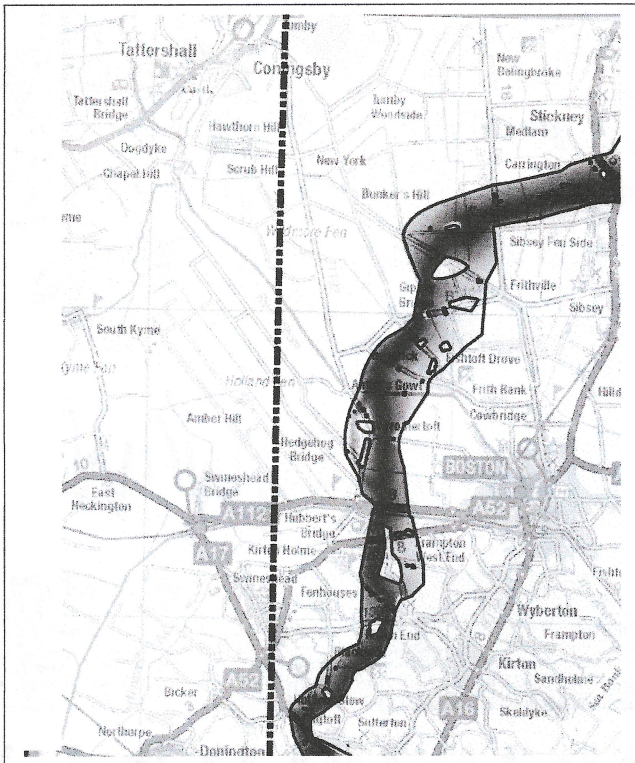
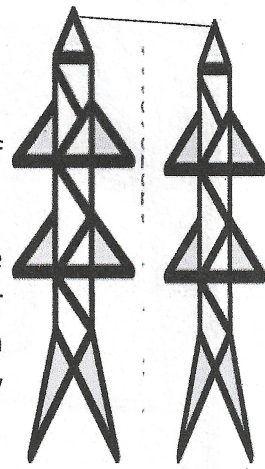
www.mumbo-jumbo.biz

MORE VILLAGE HALL EVENTS OVER THE PAGE

PYLONS WHATS GOING ON ?

So many of you have asked me, as Parish Council Chairman what is happening, rumours of rows of huge pylons towering over the village and countryside are rife.

This is a move by National Grid to improve our electric supply . The intention is to move power from a substation at Grimsby to a new substation further South at Walpole, near Kings Lynn, with a couple of substations on the route. The route at present you can see on the map and the shaded area, which is at least a kilometre wide is less than precise. It may be that our area has nothing near it but this decision seems far from definite.



So... lets attend, certainly our parish councillors hope to, the consultation meeting, the relevant one for our area is at Hubberts Bridge village hall on 27th February from 2 to 7 pm. This will allow us to ask questions, hopefully get some answers and find out more.. Most of you will have had the leaflet through your door but the event will be face to face with presentations, maps etc that may help. A more defined route would be much better, this will again be decided taking into account geography in each area. Much the same as the Viking link and Triton knoll, the difference being that they are now virtually invisible. The question being from most people is why this cannot also be beneath ground.

The decision for what finally happens will be at National level, not decided at local councils, National Grid ask for feedback, I cant imagine many people will be in favour but if we don't make our views heard they certainly wont be listened to.



SPRING IS so



COMING !

On a very much more positive note, our lovely field of daffodils near the bridge is well on the way to blooming, ready for Easter or before by the look of it. There are snowdrops just by the bridge too.